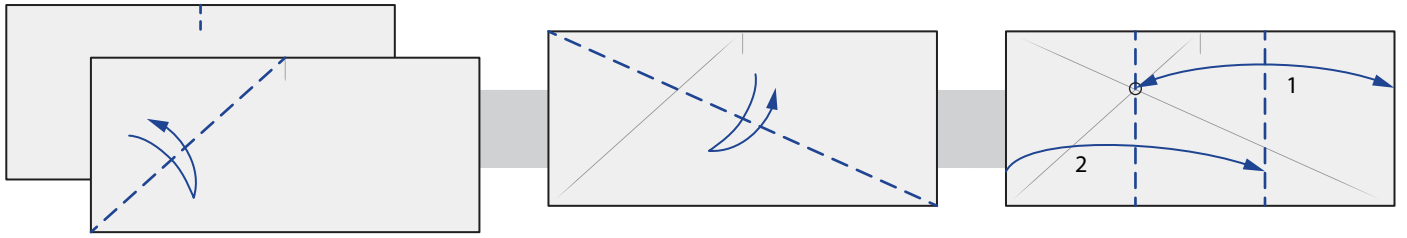
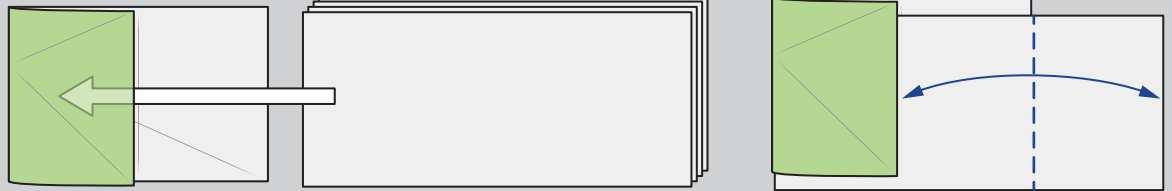


Etna Kusudama

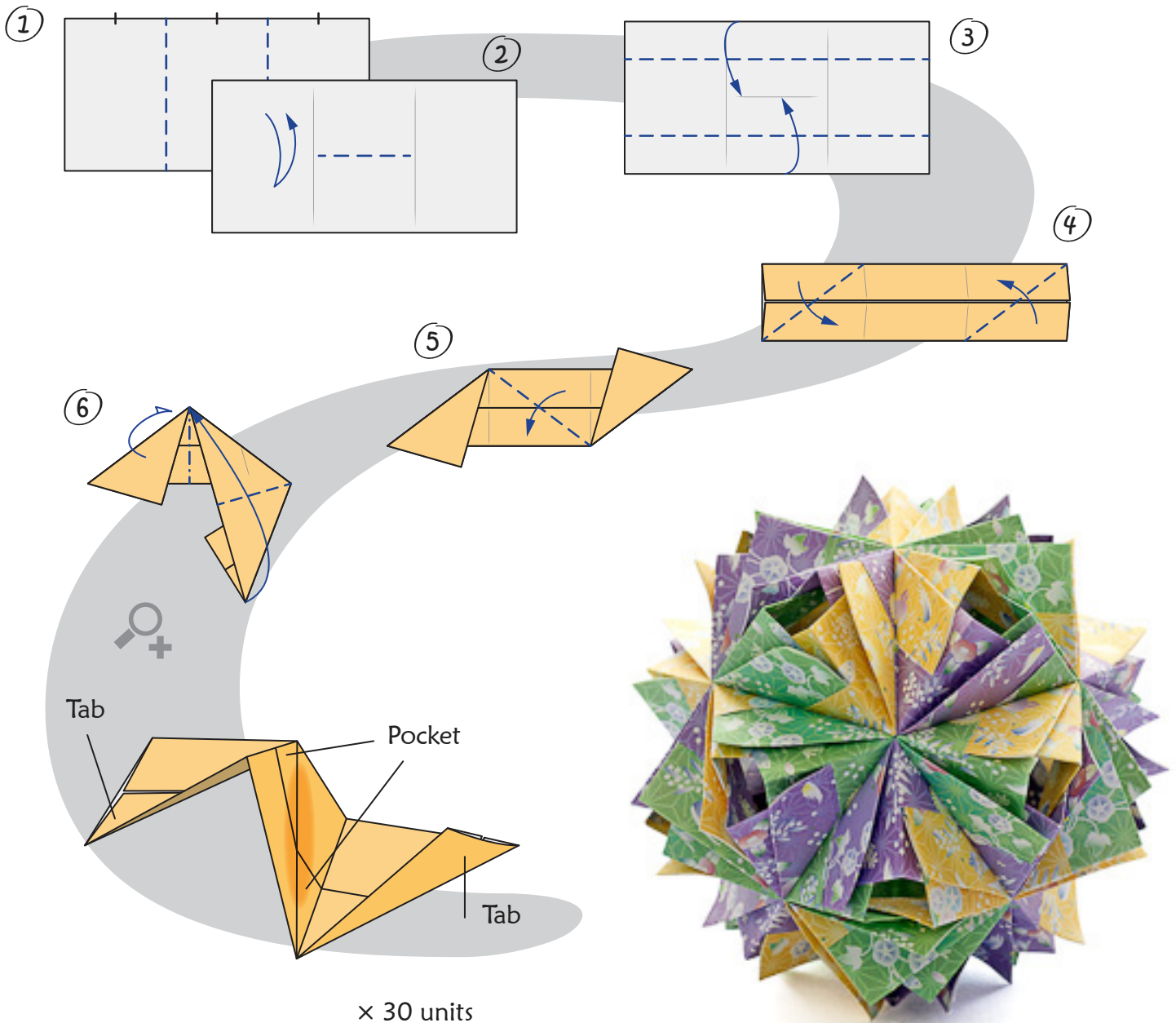
How to fold a rectangle into three equal parts



Use this sheet as a template to fold remaining sheets into three equal parts

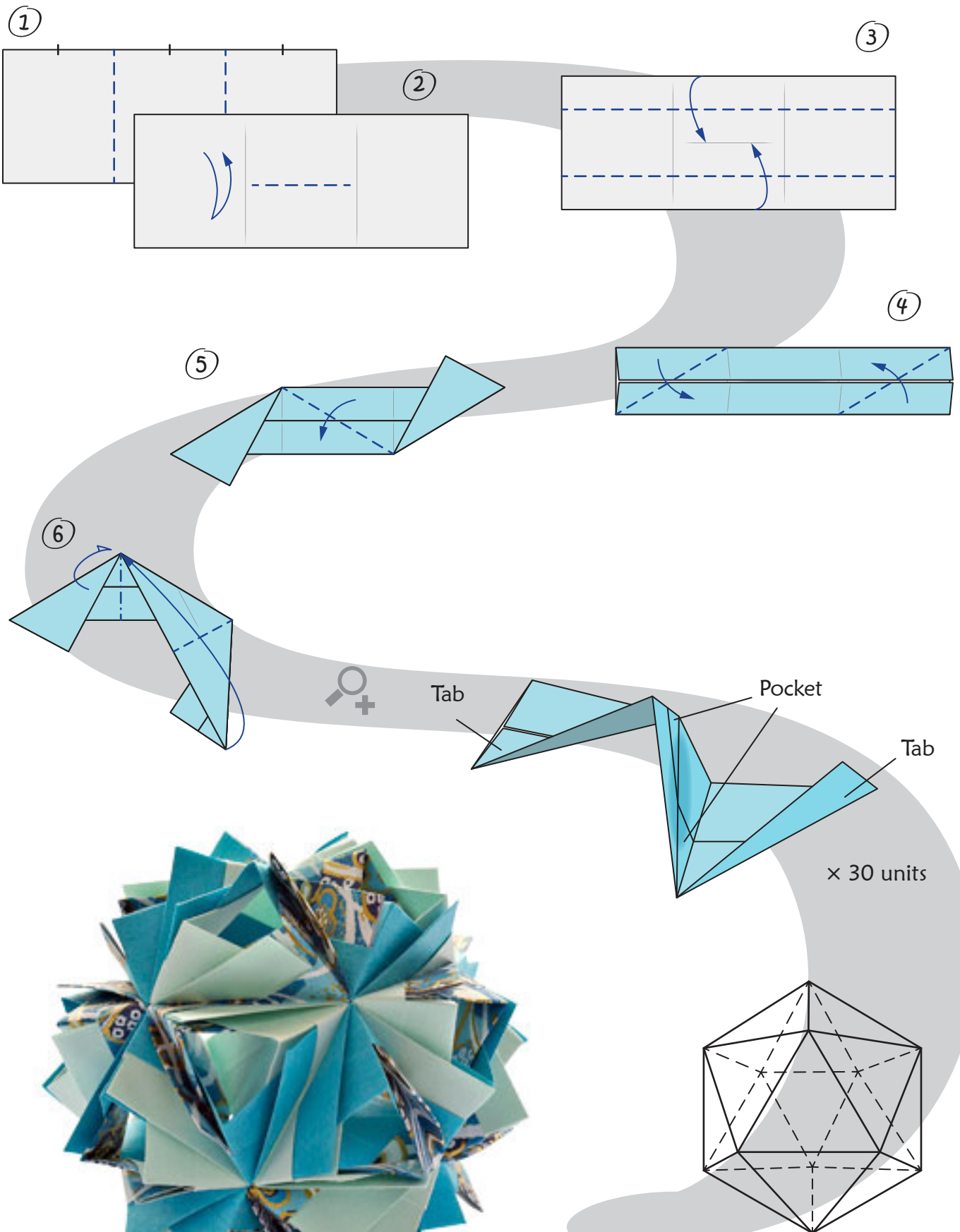


variation from half-squares



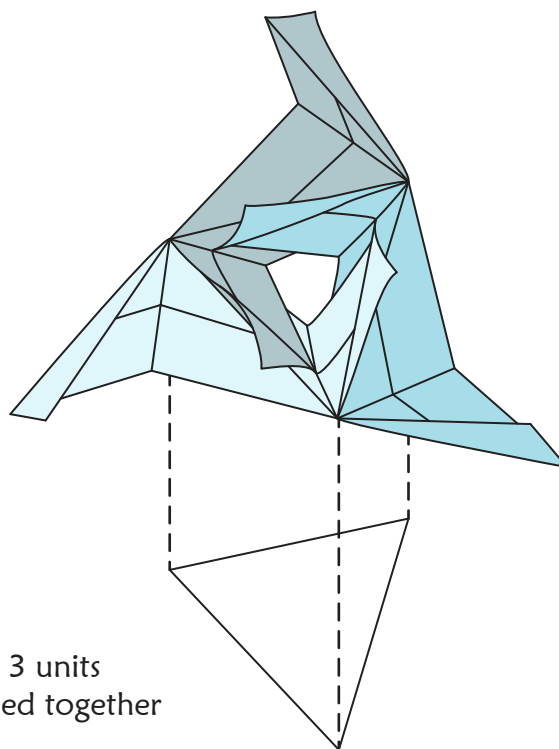
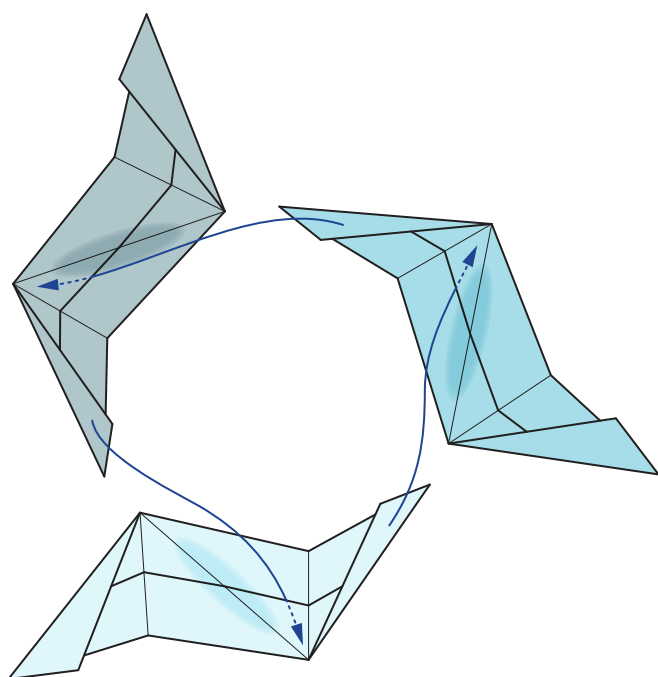
Etna Kusudama

variation from rectangles 2:5



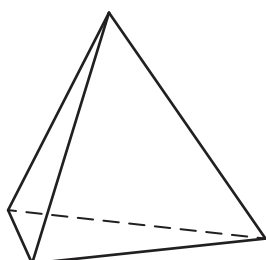
Note: Model can be made from rectangles with aspect ratio ranging from 2:3 to 2:5

Etna Kusudama - assembly

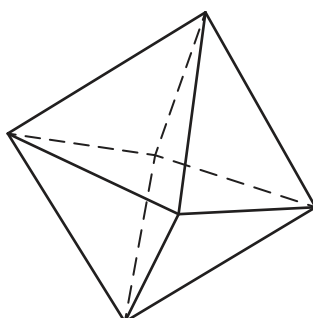


3 units
joined together

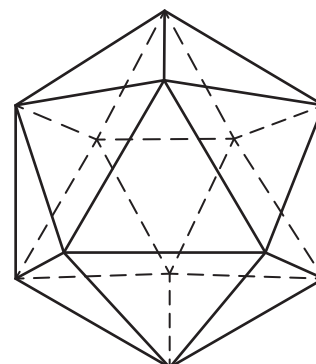
Tetrahedron
6 edges



Octahedron
12 edges



Icosahedron
30 edges



6 units



12 units



30 units

